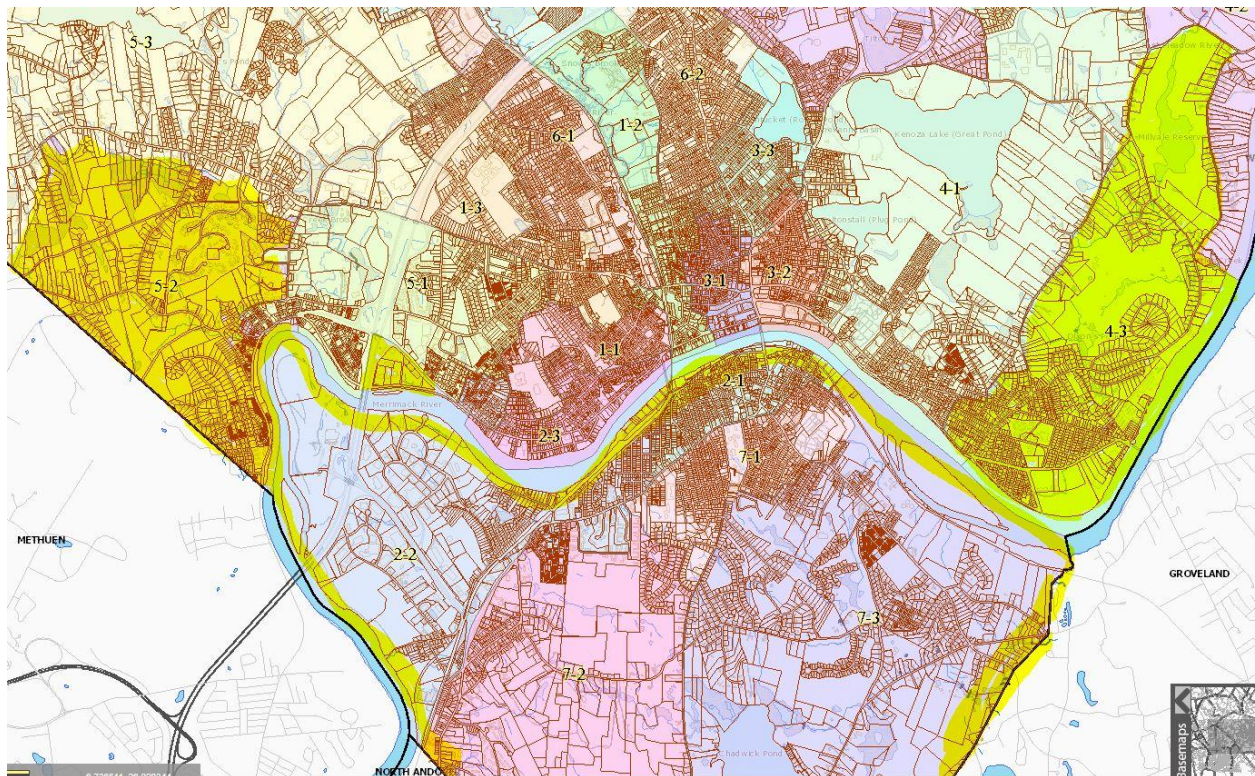


## **Attention: Residents of Bradford and Residents of Ward 4 Prec 3, Ward 5 Prec 2 and Ward 2 Prec 2 -**

Please be advised that your ward/precinct is outside of the 3<sup>rd</sup> Essex State Representative District which was formerly held by State Rep. Brian Dempsey, **YOU WILL NOT BE VOTING IN THE OCT 10<sup>th</sup> SPECIAL STATE PRIMARY AS YOU LIVE IN A DIFFERENT DISTRICT.** If you vote at Kennedy Circle, First Presbyterian Church, the Hunking School, Northpoint Bible College or Bradford Elementary School, you will not be voting in the upcoming special election on October 10<sup>th</sup>. (Areas highlighted in yellow and all of Bradford will not be participating in this election.)



### 3<sup>rd</sup> Essex State Representative District polling locations:

Ward	Precinct	Location	Address
1	1	Consentino School	685 Washington St
1	2	Washington Square Elderly Housing	25 Washington Sq
1	3	Haverhill High School - Gymnasium	137 Monument St
2	3	Moody School	59 Margin St
3	1	Citizen Center	10 Welcome St
3	2	Haverhill Public Library	Summer St
3	3	Universalist Unitarian Church	Ashland St
4	1	Nettle School	150 Boardman St
4	2	Northern Essex Community College	100 Elliot St
5	1	Julian Steele Elderly Housing	772 Washington St
5	3	West Congregational Church	767 Broadway
6	1	Haverhill High School	137 Monument St
6	2	John Greenleaf Whittier School	256 Concord St
6	3	Pentucket Lake School	252 Concord St

**These are the only Wards/Precincts that will be voting on October 10.**