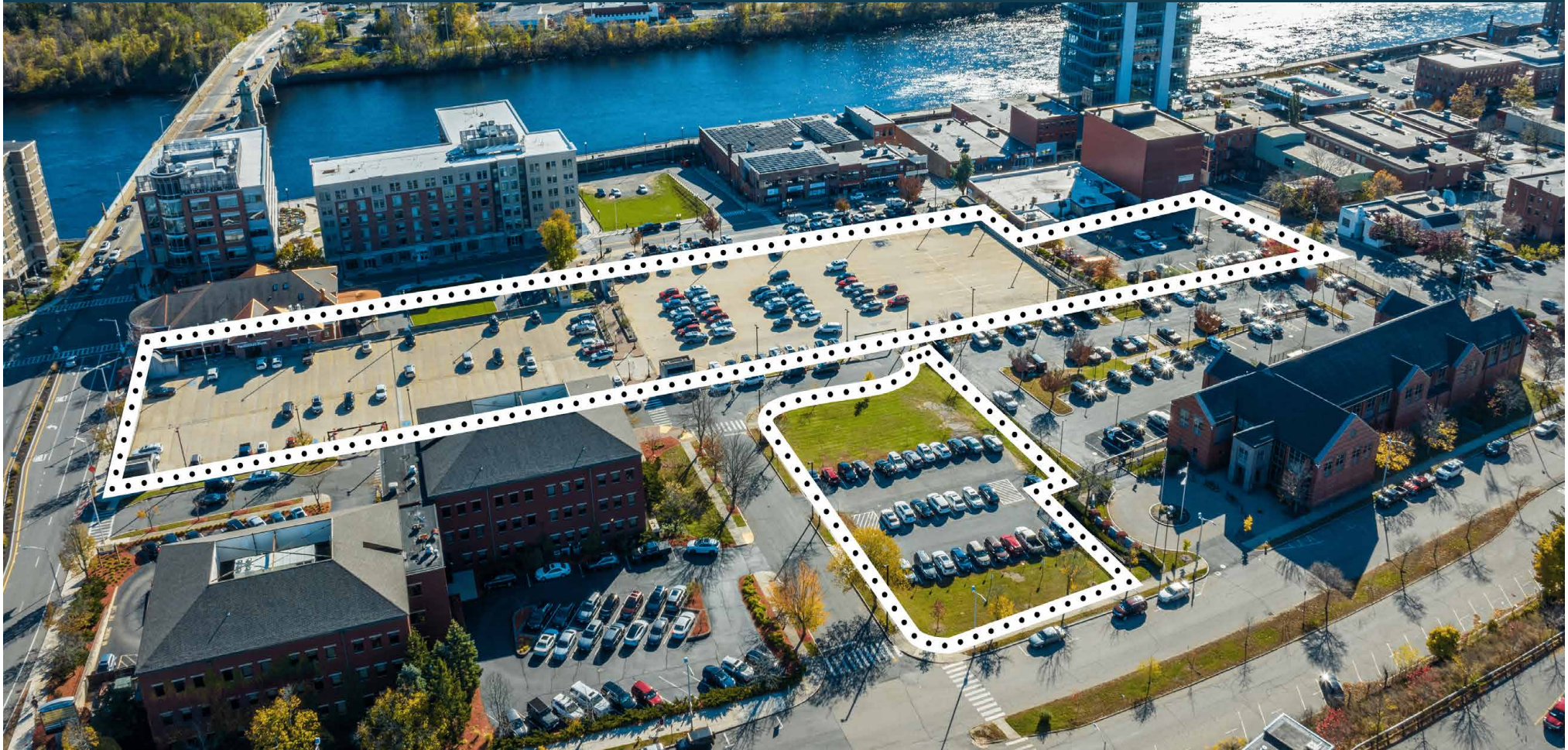




DISTRICT SQUARE



395 UNITS | 24,000 SF OF RETAIL/FOOD HALL | HAVERHILL, MA

Lupoli
DEVELOPMENT

PROJECT OVERVIEW

District Square is a transformational mixed-used, multi-phased redevelopment project in the heart of Haverhill's historic downtown. The 5.5-acre site will be transformed by the creation of 395 newly constructed apartment units as well as 790 parking spaces, and approximately 24,000 square feet of retail including a food hall.

The project benefits from full master-plan approval from the city of Haverhill that includes significant open space and public amenities that reconnects pedestrian areas to the primary retail avenue downtown as well as to the vibrancy of the Merrimack River just one block away.

The first phase of the redevelopment began in Q3 2024 with the demolition of the existing garage and the construction of a new garage that will include a retail space, already pre-leased.

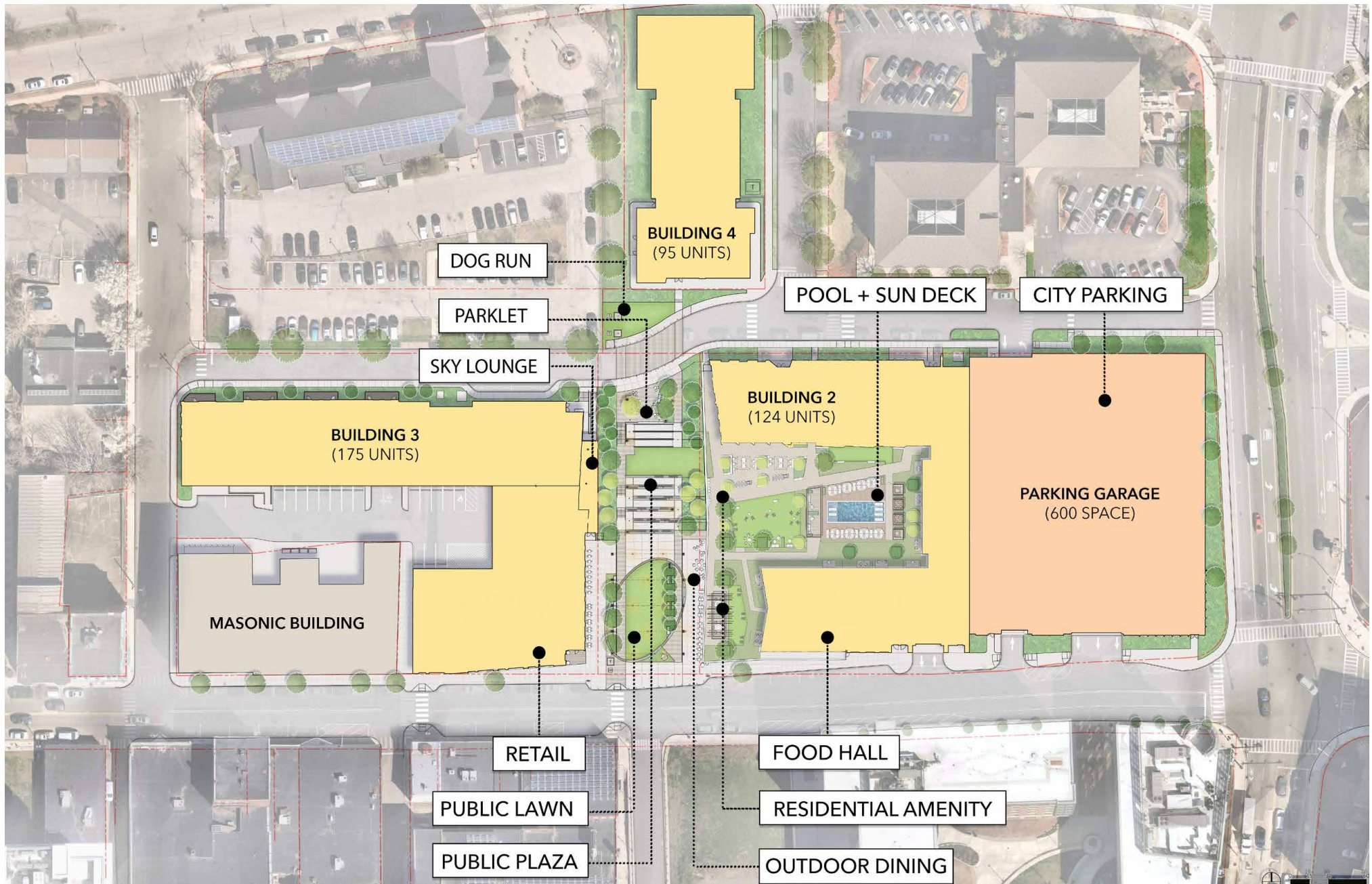
Additional information and access to development files can be shared upon request.

PROPERTY OVERVIEW

- New construction ground up mixed-use development
- 395 Market Rate Apartment Units
- 24,000 SF of retail & restaurant space
- 790 parking spaces
- Multi-building Phased development opportunity
- Approximately 1.3 acres of open & public green space
- River views & direct nearby access to the Merrimack River



PROPERTY SITE PLAN



RENDERINGS



RENDERINGS

