

Emergency Drought Declaration

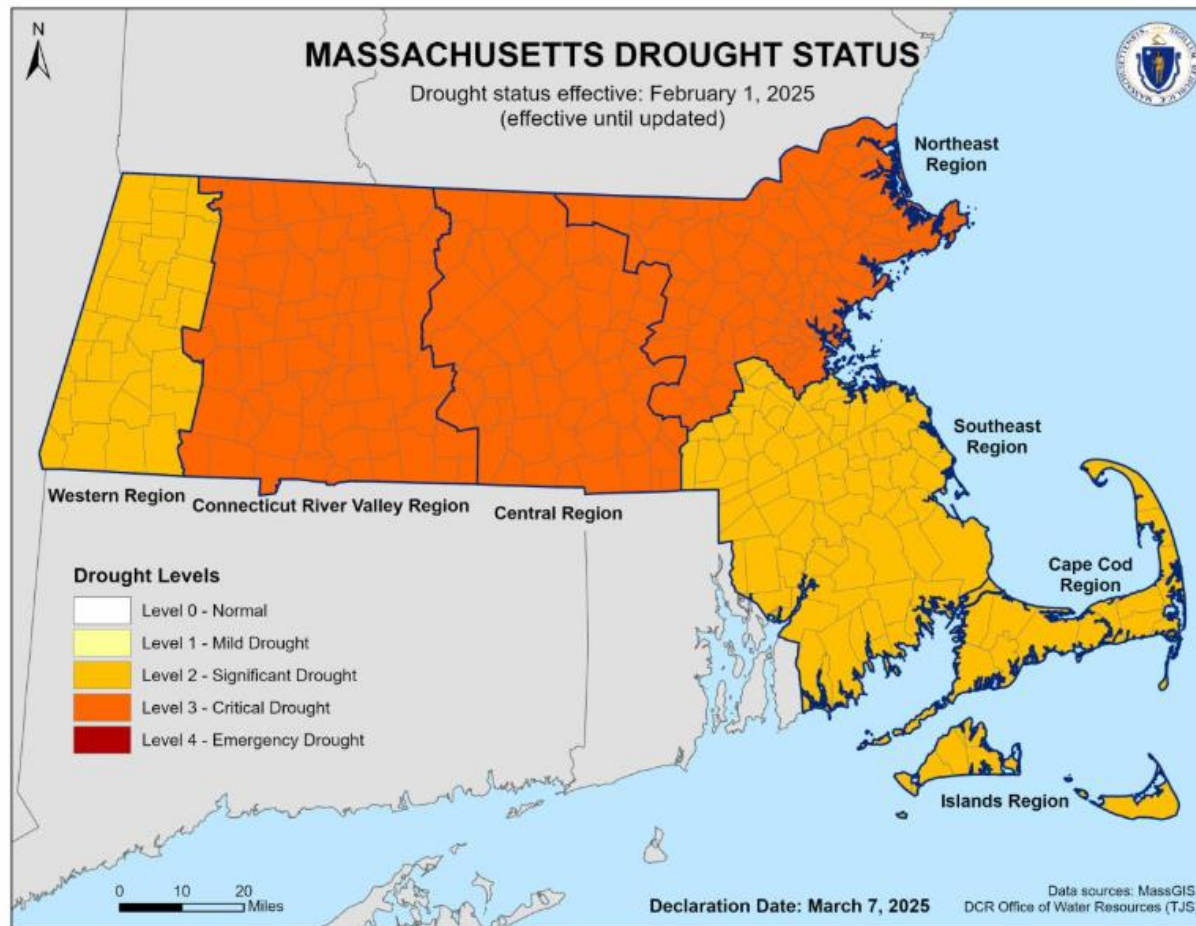
City Council Meeting

March 18, 2025

Background

- Lack of Precipitation
 - September – January 11.4 inches – lowest in 26 years
- Twofold
 - Low level
 - Delayed recovery
- Statewide drought – Northeast Mass. - Level 3 Critical
- Haverhill declared a Drought Warning in November 2024 in accordance with its Drought Management Plan

Massachusetts Drought Status



March 7, 2025:

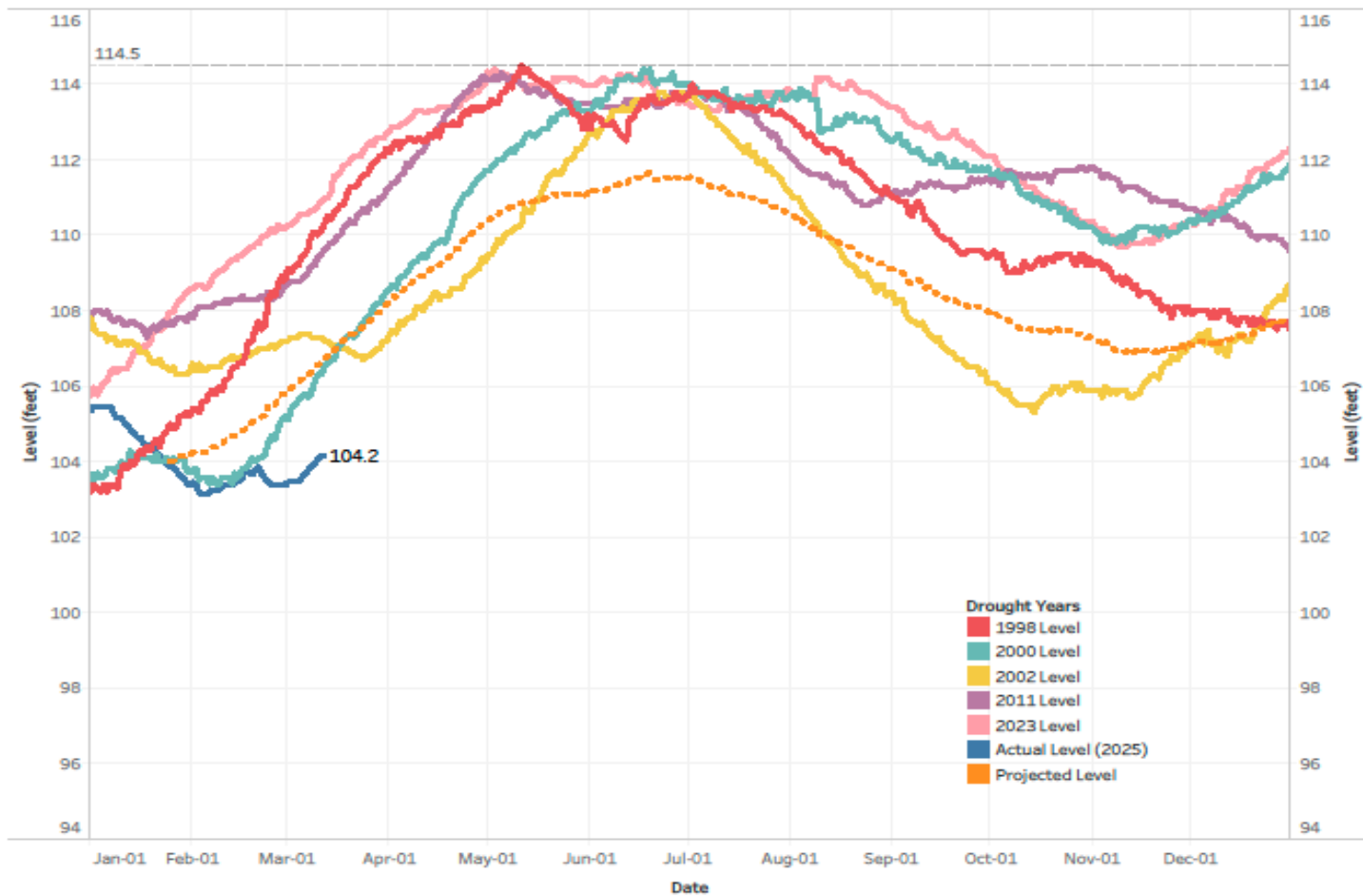
Drought Management Plan

- Chapter 250, Article VI Water Use Restriction
- Adopted in 2016 and required by MassDEP
- Defines required water conservation actions based on reservoir levels
 - Watch
 - Warning - voluntary
 - Emergency - mandatory
 - Critical

Haverhill's Reservoirs

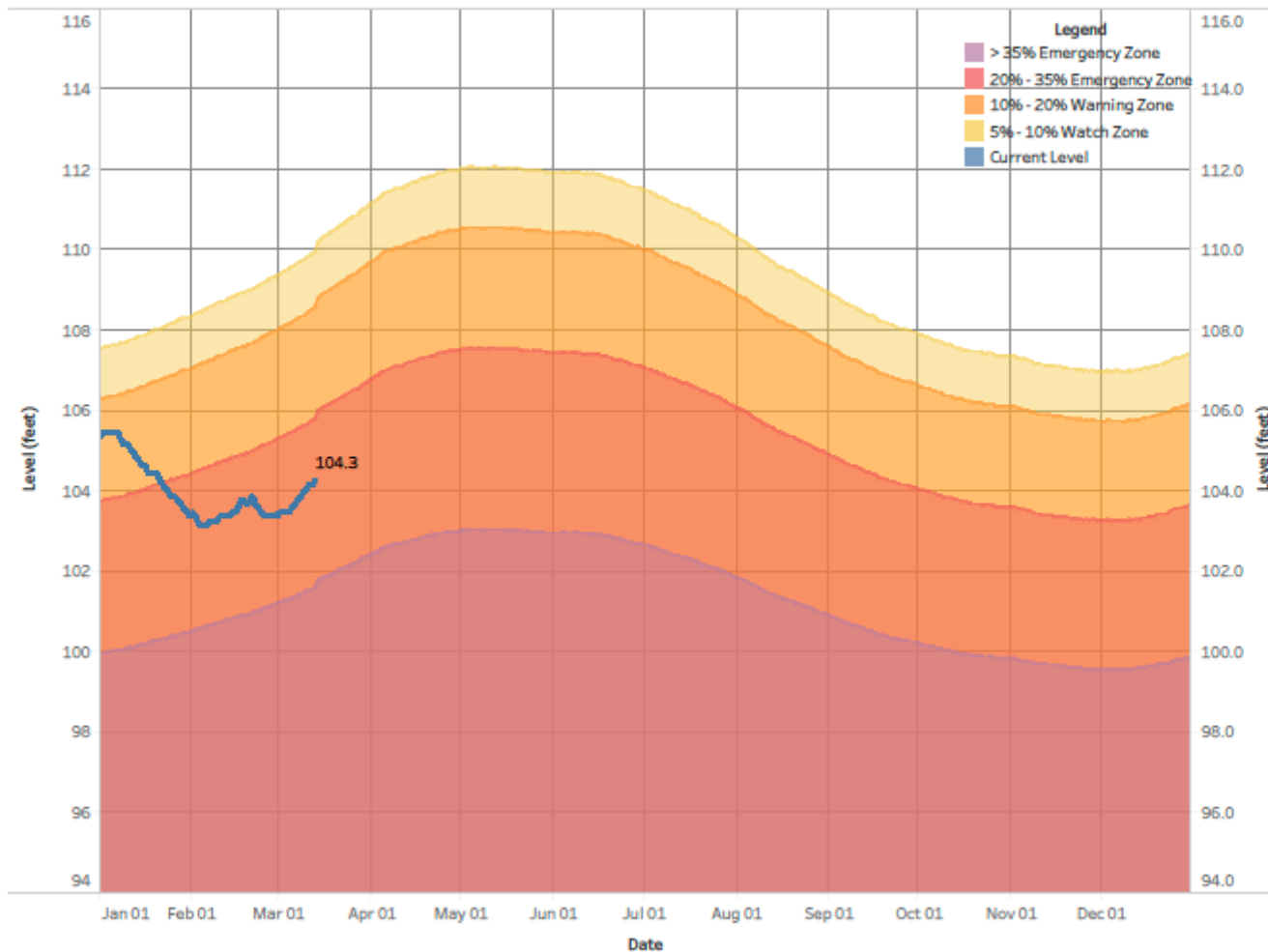
- Kenoza Lake
 - 2024 – 2.1 billion gallons
 - Current level – 104.8 feet
 - Full level – 114.5 feet
- Millvale Reservoir
 - 2024 830 million gallons
 - Estimated days of pumping – 3 months – 112 feet – Drought Watch
- Crystal Lake
 - Current level – 149.5 feet
 - Full level – 151.1 feet
 - 2024 – 266 million gallons

Drought Year Trends



Reservoir Levels

Kenoza Level with Drought Zones



Drought Emergency Declaration

- Effective March 19, 2025
- Nonessential outdoor water use is prohibited at all times
- Exceptions per Chapter 250
- Uses subject to review and approval

Monitor reservoir levels and make adjustments

It all depends on the weather!

Exceptions per Chapter 250

- Agriculture
- Uses for the core functions of a business
 - Golf courses - tees and greens, and limited fairway watering
 - Plant nurseries or agricultural operations
 - Wash equipment to prevent damage and/or maintain performance
 - Pest management
 - Plant cooling
- Irrigation with harvested and stored stormwater runoff

Uses subject to review and approval

- Public parks and recreation fields
- Establish replanted or resodded lawn or plantings
- Newly planted lawns
- Hand-held hose or drip irrigation systems
- Established lawns by hand-held hose

Residents and businesses can conserve water indoors

- Check for toilet and faucet leaks and fix them immediately
- Run dishwashers and washing machines only on a full load
- Shorter showers or utilize the flow control feature built into many newer showerheads
- Use a commercial car wash where water is typically recycled
- Water Billing Office has water-saving faucet and showerhead fixtures

Questions?